

# "You can't improve an optimum result"



by **Bob:**  
Kitesurfer  
& Grower

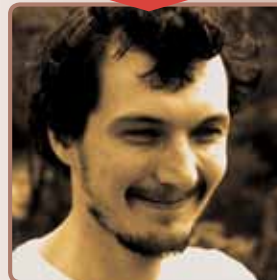
		Cultivation period In weeks	Light / Day In hours	COCO ml/ 10 litres	RHIZOTONIC ml/ 10 litres	CANNAZYM ml/ 10 litres	CANNABOOST ml/ 10 litres	PK 13/14 ml/ 10 litres	EC + in mS/cm	EC Total in mS/cm	
GROWTH	VEGETATIVE PHASE										
	Start / rooting (3 - 5 days) Make the substrate wet	<1	18	15-25	40	-	-	-	0.7-1.1	1.1-1.5	
	Vegetative phase I Plants develop in volume	0-3 <sup>1</sup>	18	20-30	20	25	-	-	0.9-1.3	1.3-1.7	
FLOWERING	Vegetative phase II - Up to growth stagnation after fructification or appearance of the formation of flowers	2-4 <sup>2</sup>	12	25-35	20	25	20 <sup>5</sup>	-	1.1-1.5	1.5-1.9	
	GENERATIVE PHASE										
	Generative Period I - Flowers or fruits develop in length. Growth in height achieved	2-3	12	30-40	5	25	20-40	-	1.4-1.8	1.8-2.2	
	Generative period II - Development of the volume (breadth) of flowers or fruit	1	12	30-40	5	25	20-40	15	1.6-2.0	2.0-2.4	
	Generative Period III - Development of the mass (weight) of flowers or fruit	2-3	12	20-30	5	25	20-40	-	1.0-1.4	1.4-1.8	
	Generative Period IV - Flowers or fruit ripening process	1-2	10-12 <sup>3</sup>	-	-	25-50 <sup>4</sup>	20-40	-	0.0	0.4	

1. This period varies depending on the species and number of plants per m2. Mother plants remain in this phase until the end (6 - 12 months).
2. The changeover from 18 to 12 hours varies depending on the variety. The rule of thumb is to change after 2 weeks.
3. Reduce hours of light if ripening goes too fast. Watch out for increasing Relative Humidity
4. Double CANNAZYM dosage to 50 ml/10 litres, if substrate is reused.
5. 20 ml/ 10 litres standard. Increase to a maximum of 40 ml/10 litres for extra flowering power

EC: EC+ value is based in mS/cm when EC water = 0.0 by 25°C, pH 6.0  
Add the EC of the tap water that is used to the recommended EC!  
The EC total in the example is with tap water with an EC of 0.4  
pH: Recommended pH is between 5.5 and 6.2  
Adding pH- can increase EC.  
Use pH- grow in the vegetative as in the generative phase to lower the pH.

The guidelines in the table aren't an iron law, but can help novice growers to develop a sophisticated fertilisation strategy. The optimum fertilisation strategy is further determined by factors such as: temperature, humidity, plant species, root volume, moisture percentage in substrate, water dosage strategy, etc.

# "You can't improve an optimum result"



by **Bob:**  
Kitesurfer  
& **Grower**

		Cultivation period in weeks	Light / Day in hours	Buffer-agent ml/ 10 litres	COGr Vega ml A/ 10 litres ml B/ 10 litres	COGr Flores ml A/ 10 litres ml B/ 10 litres	RHIZOTONIC ml/ 10 litres	CANNAZYM ml/ 10 litres	CANNABOOST ml/ 10 litres	PK 13/14 ml/ 10 litres	EC + in mS/cm	EC Total in mS/cm
GROWTH	<b>VEGETATIVE PHASE</b>											
	<b>Start / rooting (3 –5 days)</b> Make substrate wet	<1	18	20	-	-	40	-	-	-	1,0	1,4
	<b>Vegetative phase I.</b> Plants develop in volume	0-3 <sup>1</sup>	18	-	25-35	-	20	25	-	-	0,9-1,3	1,3-1,7
FLOWERING	<b>Vegetative phase II.</b> - Up to growth stagnation after fructification or appearance of the formation of flowers	2-4 <sup>2</sup>	12	-	30-40	-	20	25	20 <sup>5</sup>	-	1,2-1,6	1,6-2,0
	<b>GENERATIVE PHASE</b>											
	<b>Generative Period I.</b> - Flowers or fruits develop in length. Growth in height achieved	2-3	12	-	-	35-45	5	25	20-40	-	1,4-1,8	1,8-2,2
	<b>Generative Period II.</b> - Development of the volume (breadth) of flowers or fruit	1	12	-	-	35-45	5	25	20-40	15	1,5-1,9	1,9-2,3
	<b>Generative Period III.</b> - Development of the mass (weight) of flowers or fruit	2-3	12	-	-	30-40	5	25	20-40	-	1,1-1,5	1,5-1,9
	<b>Generative Period IV.</b> - Flowers or fruit ripening process	1-2	10-12 <sup>3</sup>	-	-	-	-	25-50 <sup>4</sup>	20-40	-	0,0	0,4

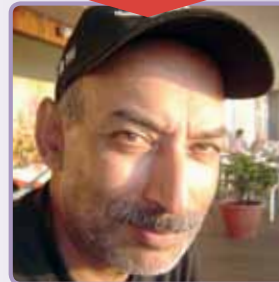
1. This period varies depending on the species and number of plants per m2. Mother plants remain in this phase until the end (6 – 12 months).
2. The changeover from 18 to 12 hours varies depending on the variety. The rule of thumb is to change after 2 weeks.
3. Reduce hours of light if ripening goes too fast. Watch out for increasing Relative Humidity
4. Double CANNAZYM dosage to 50 ml/10 litres, if substrate is reused.
5. 20 ml/ 10 litres standard. Increase to a maximum of 40 ml/10 litres for extra flowering power

EC: EC+ value is based in mS/cm when EC water = 0.0 by 25°C, pH 6.0  
Add the EC of the tap water that is used to the recommended EC!  
The EC total in the example is with tap water with an EC of 0.4  
pH: Recommended pH is between 5.5 and 6.2  
Adding pH- can increase EC.  
Use pH- grow in the vegetative phase to lower the pH.  
Use pH- bloom in the generative phase to lower the pH.

The guidelines in the table aren't an iron law, but can help novice growers to develop a sophisticated fertilisation strategy. The optimum fertilisation strategy is further determined by factors such as: temperature, humidity, plant species, root volume, moisture percentage in substrate, water dosage strategy, etc.

Make your personal feeding growschedule at [www.canna.com](http://www.canna.com)

“The decision to grow for ourselves was made quickly!”



by Brian:  
Hedonist  
& Grower

		Cultivation period In weeks	Light / Day In hours	Terra Vega ml/ 10 litres	Terra Flores ml/ 10 litres	RHIZOTONIC ml/ 10 litres	CANNAZYM ml/ 10 litres	CANNABOOST ml/ 10 litres	PK 13/14 ml/ 10 litres	EC + in mS/cm	EC Total in mS/cm
GROWTH	<b>VEGETATIVE PHASE</b>										
	<b>Start / rooting (3 –5 days) -</b> Make the substrate wet	<1	18	15-35	-	40	-	-	-	0.4-0.8	0.8-1.2
	<b>Vegetative phase I</b> Plant develops in volume	0-3 <sup>1</sup>	18	30-50	-	20	25	-	-	0.7-1.1	1.1-1.5
FLOWERING	<b>Vegetative phase II -</b> Up to growth stagnation after fructification or appearance of the formation of flowers	2-4 <sup>2</sup>	12	35-55	-	20	25	20 <sup>5</sup>	-	0.9-1.3	1.3-1.7
	<b>GENERATIVE PHASE</b>										
	<b>Generative Period I -</b> Flowers or fruits develop in length. Growth in height achieved	2-3	12	-	50-70	5	25	20-40	-	1.2-1.6	1.6-2.0
	<b>Generative period II -</b> Development of the volume (breadth) of flowers or fruit	1	12	-	50-70	5	25	20-40	15	1.5-1.9	1.9-2.3
	<b>Generative Period III -</b> Development of the mass (weight) of flowers or fruit	2-3	12	-	40-60	5	25	20-40	-	1.0-1.4	1.4-1.8
	<b>Generative Period IV -</b> Flowers or fruit ripening process	1-2	10-12 <sup>3</sup>	-	-	-	25-50 <sup>4</sup>	20-40	-	0.0	0.4

1. This period varies depending on the species and number of plants per m2.

Mother plants remain in this phase until the end (6 – 12 months).

2. The changeover from 18 to 12 hours varies depending on the variety.

The rule of thumb is to change after 2 weeks.

3. Reduce hours of light if ripening goes too fast.

Watch out for increasing Relative Humidity

4. Double CANNAZYM dosage to 50 ml/10 litres, if substrate is reused.

5. 20 ml/ 10 litres standard. Increase to a maximum of 40 ml/10 litres for extra flowering power

EC: EC+ value is based in mS/cm when EC water = 0.0 by 25°C, pH 6.0

Add the EC of the tap water that is used to the recommended EC!

The EC total in the example is with tap water with an EC of 0.4

pH: Recommended pH is between 5.8 and 6.2

Adding pH- can increase EC.

Use pH- grow in the vegetative phase to lower the pH

Use pH- bloom in the generative phase to lower the pH

The guidelines in the table aren't an iron law, but can help novice growers to develop a sophisticated fertilisation strategy. The optimum fertilisation strategy is further determined by factors such as: temperature, humidity, plant species, root volume, moisture percentage in substrate, water dosage strategy, etc.



“As soon as the pH drops towards 5.2 the plants show that they want to flower”



by Jeff:  
Mountaineer  
& Grower

		Cultivation period In weeks	Light / Day In hours	Aqua Vega ml/ 10 litres	Aqua Flores ml/ 10 litres	RHIZOTONIC ml/ 10 litres	CANNAZYM ml/ 10 litres	CANNABOOST ml/ 10 litres	PK 13/14 ml/ 10 litres	EC + in mS/cm	EC Total in mS/cm
GROWTH	VEGETATIVE PHASE										
	Start / rooting (3 –5 days) - Make the substrate wet	<1	18	15-25	-	40	-	-	-	0.7-1.1	1.1-1.5
	Vegetative phase I - Plants develop in volume	0-3 <sup>1</sup>	18	20-30	-	20	25	-	-	0.9-1.3	1.3-1.7
FLOWERING	Vegetative phase II - Up to growth stagnation after fructification or appearance of the formation of flowers	2-4 <sup>2</sup>	12	25-35	-	20	25	20 <sup>5</sup>	-	1.2-1.6	1.6-2.0
	GENERATIVE PHASE										
	Generative Period I - Flowers or fruits develop in length. Growth in height achieved	2-3	12	-	30-40	5	25	20-40	-	1.4-1.8	1.8-2.2
	Generative period II - Development of the volume (breadth) of flowers or fruit	1	12	-	30-40	5	25	20-40	15	1.6-2.0	2.0-2.4
	Generative Period III - Development of the mass (weight) of flowers or fruit	2-3	12	-	20-30	5	25	20-40	-	1.0-1.4	1.4-1.8
	Generative Period IV - Flowers or fruit ripening process	1-2	10-12 <sup>3</sup>	-	-	-	25-50 <sup>4</sup>	20-40	-	0.0	0.4

1. This period varies depending on the species and number of plants per m2.

Mother plants remain in this phase until the end (6 – 12 months).

2. The changeover from 18 to 12 hours varies depending on the variety.

The rule of thumb is to change after 2 weeks.

3. Reduce hours of light if ripening goes too fast.

Watch out for increasing Relative Humidity

4. Double CANNAZYM dosage to 50 ml/10 litres, if substrate is reused.

5. 20 ml/ 10 litres standard. Increase to a maximum of 40 ml/10 litres for extra flowering power.

EC: EC+ value is based in mS/cm when EC water = 0.0 by 25°C, pH 6.0.

Add the EC of the tap water that is used to the recommended EC!

The EC total in the example is with tap water with an EC of 0.4.

pH: Recommended pH is between 5.2 and 6.2.

Adding pH- can increase EC.

Use pH- grow in the vegetative phase to lower the pH

Use pH- bloom in the generative phase to lower the pH.

The guidelines in the table aren't an iron law, but can help novice growers to develop a sophisticated fertilisation strategy. The optimum fertilisation strategy is further determined by factors such as: temperature, humidity, plant species, root volume, moisture percentage in substrate, water dosage strategy, etc.

“It’s important that the EC  
doesn’t rise to much in the slabs”



by Karel:  
Gardener  
& Grower

		Cultivation period In weeks	Light / Day In hours	Hydro Vega ml A/ 10 litres ml B/ 10 litres	Hydro Flores ml A/ 10 litres ml B/ 10 litres	RHIZOTONIC ml/ 10 litres	CANNAZYM ml/ 10 litres	CANNABOOST ml/ 10 litres	PK 13/14 ml/ 10 litres	EC + in mS/cm	EC Total in mS/cm
GROWTH	<b>VEGETATIVE PHASE</b>										
	<b>Start / rooting (3 –5 days)</b> Make the substrate wet	<1	18	10-20	-	40	-	-	-	0.7 - 1.1	1.1 - 1.5
	<b>Vegetative phase I</b> Plants develop in volume	0-3 <sup>1</sup>	18	15-25	-	20	25	-	-	0.9-1.3	1.3-1.7
FLOWERING	<b>Vegetative phase II</b> - Up to growth stagnation after fructification or appearance of the formation of flowers	2-4 <sup>2</sup>	12	20-30	-	20	25	20 <sup>5</sup>	-	1.2-1.6	1.6-2.0
	<b>GENERATIVE PHASE</b>										
	<b>Generative Period I</b> - Flowers or fruits develop in length. Growth in height achieved	2-3	12	-	25-35	5	25	20-40	-	1.4-1.8	1.8-2.2
	<b>Generative period II</b> - Development of the volume (breadth) of flowers or fruit	1	12	-	25-35	5	25	20-40	15	1.5-1.9	1.9-2.3
	<b>Generative Period III</b> - Development of the mass (weight) of flowers or fruit	2-3	12	-	15-25	5	25	20-40	-	1.0-1.4	1.4-1.8
	<b>Generative Period IV</b> - Flowers or fruit ripening process	1-2	10-12 <sup>3</sup>	-	-	-	25-50 <sup>4</sup>	20-40	-	0.0	0.4

1. This period varies depending on the species and number of plants per m2. Mother plants remain in this phase until the end (6 – 12 months).
2. The changeover from 18 to 12 hours varies depending on the variety. The rule of thumb is to change after 2 weeks.
3. Reduce hours of light if ripening goes too fast. Watch out for increasing Relative Humidity
4. Double CANNAZYM dosage to 50 ml/10 litres, if substrate is reused.
5. 20 ml/ 10 litres standard. Increase to a maximum of 40 ml/10 litres for extra flowering power

EC: EC+ value is based in mS/cm when EC water = 0.0 by 25°C, pH 6.0  
Add the EC of the tap water that is used to the recommended EC!  
The EC total in the example is with tap water with an EC of 0.4  
pH: Recommended pH is between 5.2 and 6.2  
Adding pH- can increase EC.  
Use pH- grow in the vegetative phase to lower the pH.  
Use pH- bloom in the generative phase to lower the pH.

The guidelines in the table aren't an iron law, but can help novice growers to develop a sophisticated fertilisation strategy. The optimum fertilisation strategy is further determined by factors such as: temperature, humidity, plant species, root volume, moisture percentage in substrate, water dosage strategy, etc.



## Block

2. Standard: 8 ml/Gal. for extra flowering strength 15 ml/Gal.

BIOCANNA nutrients are not recommended on bulk grade peat products that lack a nutrient starter charge and long-term pH control. We advise to use Bio-Terra Plus with our BIOCANNA nutrients.

**The Bio Solution for growth and bloom**



# BIOCANNA

The Bio Solution for growth and bloom



Light per day  
(hours)

Bio Vega  
ml/10L

Bio Flores  
ml/10L

BioRHIZOTONIC  
ml/10L

BioBOOST  
ml/10L

GROW

**Start Root formation** - Duration +/- 1 week

18

10 - 20

-

40

-

**Vegetative stage** - Duration +/- 1 to 3 weeks  
Fast growth

12

20

-

10 - 20

-

BLOOM

**Generative stage 1** - Duration +/- 1 to 2 weeks  
Growth stagnate first sign of fruit formation pistels appears

12

-

40

5

20 - 40<sup>1</sup>

**Generative stage 2** - Duration +/- 1 week  
Small fruit develop

12

-

40

5

20 - 40<sup>1</sup>

**Generative stage 3** - Duration +/- 2 tot 3 weeks  
Increases in size

12

-

40

5

20 - 40<sup>1</sup>

**Generative stage 4** - Duration +/- 1 tot 2 weeks  
Fruit increases in size and ripen

12

-

-

-

20 - 40<sup>1</sup>

Adjusting the pH, when growing organic is not advised, as it can release the wrong nutrient elements at the wrong time.

Measuring the EC when growing organics is not necessary (EC measures the salts in a liquid) as organic nutrients are not salt-based it will give you an incorrect reading!

<sup>1</sup> Give 20 ml per 10L for the most effective results; raise to 40ml per 10L for optimum results!

For more information on BIOCANNA ask for the BIOCANNA InfoPaper or download online.

Copyright BIOCANNA - [www.biocanna.com](http://www.biocanna.com)